

WE WALK BY

Faith
NOT BY SIGHT

For we walk by faith, not by sight.
—2 Corinthians 5:7

Dear Friends of Lyngblomsten,

As a Christian organization, we truly do walk by faith—and by our mission. No one knows for sure what the future holds, but we look ahead as far as we can and make the best plans possible, knowing God is ever-present. Planning was a substantial element of our work in 2024.

The 2024–2029 Strategic Plan that the Lyngblomsten Board and operational leaders developed this past year is propelling us forward with four strategic priorities to guide our path and carry us through an uncertain future. The priorities are focused on sustaining high employee engagement and retention, ensuring overall client satisfaction, maintaining strong financial performance, and fostering continuous improvement.

While 2024 saw many accomplishments, a few stand out. First, we were honored to receive a grant from Lutheran Services in America to introduce two companion robots—one in each of our memory care programs. This pilot project is exploring how robots can support staff and enhance the resident experience.

Another key initiative was the collaborative creation of a pharmacy. With service set to begin in mid-2025, the new pharmacy aims to improve ordering and expedite delivery times for our residents.

A third achievement was the expansion of The Gathering, a longstanding impactful program offered through Community Services. Now available three days per week at our Lino Lakes and Como Park campuses, The Gathering provides more opportunities for individuals living at home with memory loss to participate in engaging programming while giving their family caregivers a much-needed break.

Looking ahead, 2025 is set to be another busy year. As soon as the frost melts, renovations will begin on the courtyard at our Como Park campus, a project supported by a successful capital campaign last year. Additionally, we will be exploring the opportunity to add a care center to the Lino Lakes campus, which will further enhance the continuum of care and services we provide.

Our success is possible because of the many people dedicated to the care and concern of older adults. We are grateful for our employees, volunteers, donors, member congregations, providers, and partners, and we are honored to live our faith in service to older adults.

Sincerely and in Christ,

Debra George
Debra George
Board Chair

Jeffrey Heinecke
Jeffrey Heinecke
President & CEO

HIGHLIGHTS FROM 2024

Residential Services



Culinary Services at Como Park added healthier, freshly prepared items, incorporating more fruits and vegetables.

- The Lyngblomsten Care Center started several new initiatives in 2024, including securing a \$15,000 grant from Lutheran Services in America to pilot robots that use facial recognition to interact with residents through greetings, music, and games (a robot will be tested at each campus). A support group was started for family members of residents with memory loss, as well as a grief support group series for residents, family members, and others. In partnership with Medrina, the care center added a weekly visiting physiatrist for rehabilitation and a pulmonologist providing specialized care.
- The Lyngblomsten Apartments successfully passed three routine, periodic inspections (physical plant, fire safety, and management review) that happened to come due in the same year. Resident engagement in 2024 was strong, supported by the establishment of a Resident Council, which met monthly and provided input on outings and art classes. A resident greeter program was introduced, which has current residents helping welcome and orient new residents. Additionally, more programs were added that reflected residents' diverse cultures, ages, and interests.
- The Heritage at Lyngblomsten implemented a level-of-care system for its assisted living services, in which residents are assigned a package of services based on their care needs (instead of paying for services à la carte). Staff began serving residents a hearty hot breakfast once a month, replacing that morning's regularly scheduled continental breakfast. In preparation for an upcoming building refresh, residents were surveyed regarding desired improvements for their apartments and shared spaces.
- Lyngblomsten at Lino Lakes completed its first full year of operations, which included its first state survey for its assisted living with dementia care license. The community continued to refine its processes and services, including expanding salon offerings and launching a weekly grief support group. At year's end, 144 (or 85%) of the campus' 169 units (apartments and townhomes) were occupied by 182 residents.
- Home Health Services focused on operational improvements, including adapting its patient record software program to handle two licenses—one for comprehensive home care, the other for assisted living—for residents served on the Como Park campus. A tiered payment system was implemented for residents at the Lyngblomsten Apartments, in which Elderly Waiver and private-pay service models were separated. Care levels were implemented at The Heritage at Lyngblomsten.



Lyngblomsten Community Services



The Gathering began one day a week at the Lyngblomsten at Lino Lakes campus starting in January.

- New memory loss enrichment programs were introduced at both Lyngblomsten campuses. With the Lino Lakes campus fully operational, a site for The Gathering was added there in January, providing enrichment for persons experiencing memory loss and respite for their caregivers one day a week. On the Como Park campus, an eight-session Pop-Up Arts Memory Café was held, offering individuals with memory loss and their care partners a time to connect, express their creativity through an art project, and receive helpful caregiving information.
- Community Services staff assisted 277 informal family caregivers in 2024—an increase from 200 in 2023—providing personalized resource and education consultations, hosting support groups, and offering respite through The Gathering.
- Older adults participated in several health screenings and evidence-based wellness classes. Offered in partnership with the Faith Community Nurse Network of the Greater Twin Cities, these opportunities included Walk with Ease, a falls-prevention class provided for the first time by Community Services.

Supporters



Lifelong Learning & the Arts is one of the programs supported by donors. Here, residents of the Lyngblomsten Apartments learn flamenco dancing.

- Lyngblomsten’s roster of registered volunteers reached 760 by year’s end—an increase of more than 200 from 2023 and the largest total number since the COVID-19 pandemic temporarily paused volunteer activities. Individual and group volunteers provided 19,180 hours of service for Lyngblomsten’s residents and community participants.
- As Lyngblomsten at Lino Lakes welcomed more residents and continued refining its operations, the need for more volunteers on campus grew, resulting in several new volunteer opportunities (including for The Gathering and campus dining venues) and the hiring of a full-time Volunteer Coordinator for campus.
- The Lyngblomsten Foundation conducted the *Grounds for Joy!* fundraising campaign for renovating the central courtyard on Lyngblomsten’s Como Park campus. The renovation will encompass upgrades to fix that which has become worn and introduce new features—such as a pavilion for hosting concerts and classes, a grilling station, and a memorial paver garden with a water feature—all of which are aimed at enhancing the

outdoor space for all who live, work, volunteer, or visit. The renovation was originally planned for summer of 2024, but due to delays at the City of St. Paul with the construction permit, the project will get underway in the spring of 2025.

- Donors contributed nearly \$1.05 million (41% from estate gifts) to support a variety of Lyngblomsten programs and services for older adults, including spiritual care, art and music experiences, caregiver education and support (particularly for families and friends of those with memory loss), and Anna’s café & gift shop.

Other

- Lyngblomsten’s last Life Member (former Branch Member), Karina Allen, passed away May 28, 2024. She was involved with Lyngblomsten in myriad ways since her early childhood.
- Lyngblomsten adopted a new strategic plan in April 2024 to guide the organization over the next five years. The plan focuses on four key priorities: employee engagement and retention, client satisfaction, financial strength, and continuous improvement. Led by the Lyngblomsten Board of Directors, the collaborative effort—lasting nearly a year—engaged staff and congregation delegates to develop a strategic plan that provides flexibility to adapt to rapidly evolving changes in the senior living sector.
- Lifelong Learning & the Arts continued to provide high-quality opportunities with professional artists for Lyngblomsten residents and participants. As the Lino Lakes campus settled into its first full year of serving residents, current

arts offerings were refined and new ones added, including a series of studio art classes for residents in assisted living. In addition, staff focused on providing more off-campus experiences for residents from both campuses, exploring the vibrant cultural scene of the Twin Cities.

- Three Lyngblomsten staff from varied departments took training to become coaches for Dementia Live®. Dementia Live is an immersive exercise that simulates cognitive and sensory challenges to help participants understand the experiences of those living with memory loss. The plan is for the coaches to offer the exercise as an educational opportunity to Lyngblomsten employees, volunteers, family caregivers, and others.



Residents from Lyngblomsten at Lino Lakes participated in a Japanese weaving class, one of the many arts opportunities Lyngblomsten organized for residents and participants from both campuses throughout the year.

People Served

January–December 2024

863 persons

Lyngblomsten
Community Services

198 persons

Home Health Services

*Number reflects residents at the
Como Park and Lino Lakes campuses*

616 persons

Lyngblomsten Care Center

146 persons

Lyngblomsten Apartments

83 persons

The Heritage at Lyngblomsten

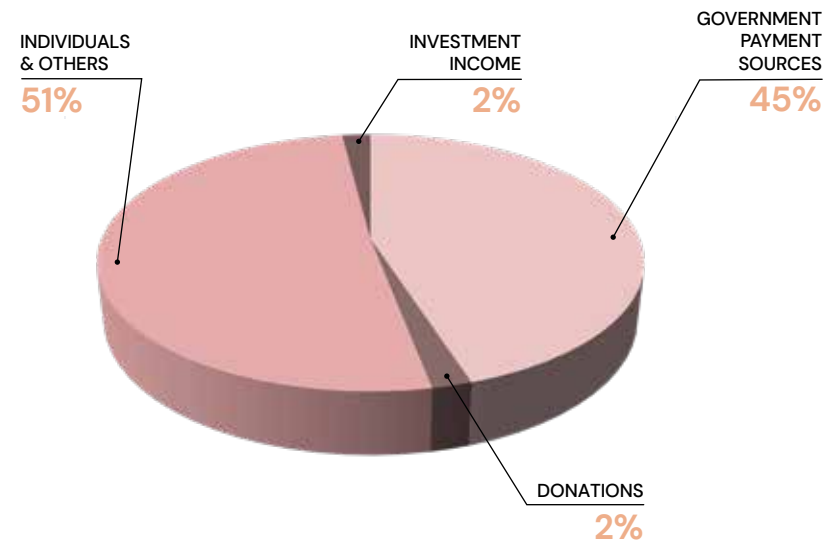
212 persons

Lyngblomsten at Lino Lakes

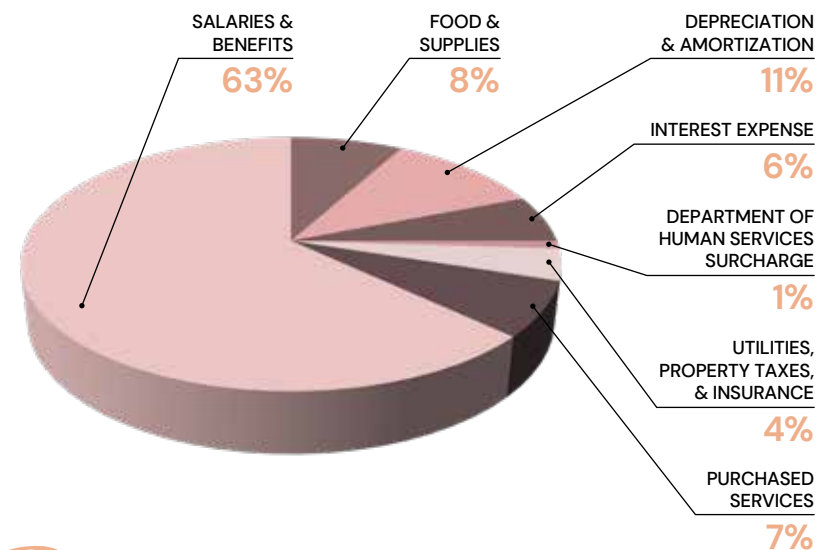
Financials

January–December 2024

Revenues



Expenses



Volunteer Statistics

January–December 2024

19,180

Hours
Volunteered

760

Registered
Volunteers

Fundraising Statistics

January–December 2024

\$1,046,558

Contributed

600

Donors

1,212

Gifts

24

Corporate
Sponsors

Memberships

Heritage Society

25 Households

*Persons who have chosen to help ensure the future capacity of
Lyngblomsten by providing financial support through a charitable
gift annuity, naming Lyngblomsten in their will or life insurance
beneficiary, or establishing an endowment of \$10,000 or more.*

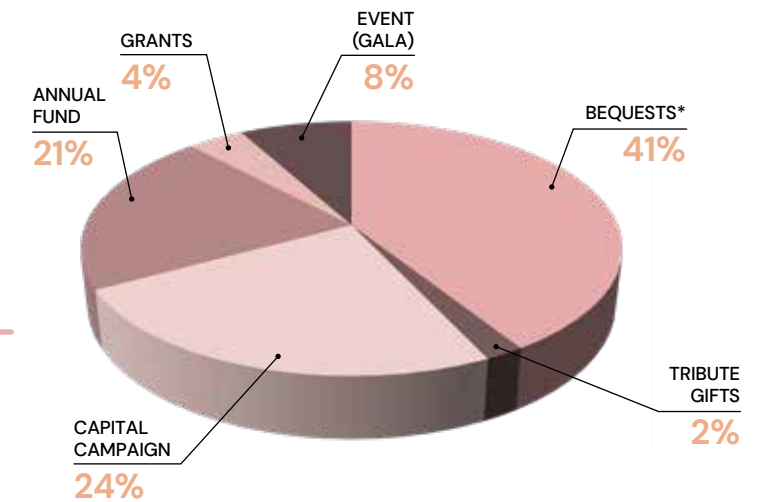
President's Club

80 Households

*Annual membership granted to donors giving
\$1,000 or more during the calendar year.*

Lyngblomsten Foundation Sources of Donations

January–December 2024



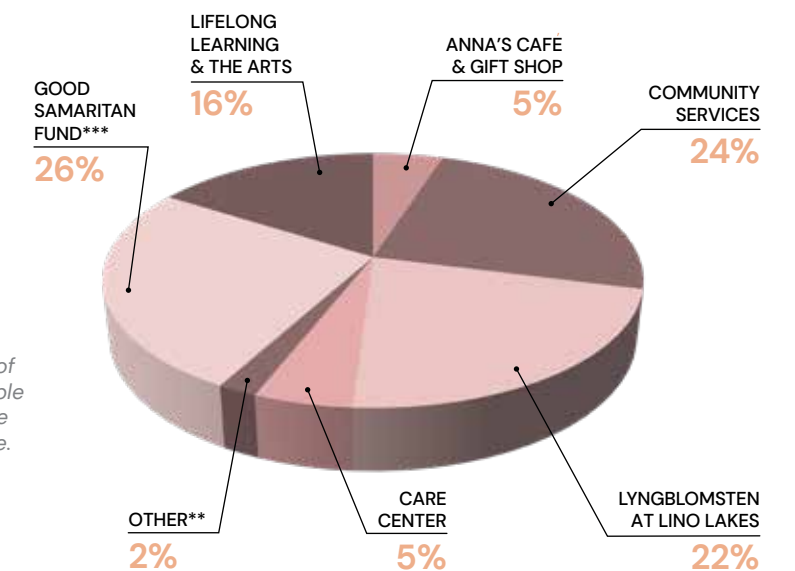
**Includes gifts from three estates.*

Lyngblomsten Foundation Distribution to Programs

January–December 2024

\$1,703,651

Dollars Distributed



***Lyngblomsten Apartments, Spiritual Care, and Annuity Interest*

****Includes major subsidies to Home Health Services*

Our Guiding Principles

For our **participants**, Lyngblomsten promotes dignity through informed choices for living options, respecting individuality, and orchestrating the best life possible.

For our participants' **families**, Lyngblomsten supports their needs through careful listening, traveling alongside them as they walk the journey with their loved ones.

For our **employees**, Lyngblomsten strives to foster an environment that encourages compassionate caregiving, innovative thinking, problem-solving, and opportunity seeking.

Through our **community** of donors, volunteers, corporate congregations, and socially responsible corporations, Lyngblomsten encourages the individual to live one's personal ministry by enhancing the lives of older adults.

Our Mission

Influenced by Christ, Lyngblomsten provides a ministry of compassionate care and innovative services to older adults in order to preserve and enhance their quality of life.

Our Pillars

Influenced by Christ

Innovation & Leadership

Resources & Support

Person-Centered &
Dignity-Enhancing Experiences

Engaged Lifestyle

Member Congregations

The year indicates when the church became a member.

Amazing Grace Lutheran
Inver Grove Heights, 2007

Augustana Lutheran
West St. Paul, 2002

**Bethlehem Lutheran
in the Midway**
St. Paul, 1962

**Centennial United
Methodist**
Roseville, 2000

Christ on Capitol Hill
St. Paul, 1961

**Community of
Grace Lutheran**
White Bear Lake, 1998

Como Park Lutheran
St. Paul, 1960

**Falcon Heights
United Church of Christ**
Falcon Heights, 1999

Gloria Dei Lutheran
St. Paul, 1985

**Gustavus Adolphus
Lutheran**
St. Paul, 1988

Holy Childhood Catholic
St. Paul, 1991

Immanuel Lutheran
St. Paul, 1960

Incarnation Lutheran
Shoreview, 1990

Jehovah Lutheran
St. Paul, 1995

Lakeview Lutheran
St. Paul, 1960

Living Waters Lutheran
Lino Lakes, 2022

North Heights Lutheran
Roseville/Arden Hills, 1975

Prince of Peace Lutheran
Roseville, 1961

Redeemer Lutheran
White Bear Lake, 1960

Roseville Lutheran
Roseville, 1975

St. Andrew's Lutheran
Mahtomedi, 1991

St. Anthony Park Lutheran
St. Paul, 1960

St. Timothy Lutheran
St. Paul, 1961

Salem Lutheran
West St. Paul, 1965

Board of Directors

2024–2025

Debra George, *Chair*
Dr. Michael Lovett, *Vice Chair*
Dr. Mark Knudson, *Treasurer*
Diana Rockstad, *Secretary*
Jeff Heinecke, *President & CEO*

Dr. Joan Brandt
Justin Bryant
Dr. Mary Hauck
Chuck Heidbrink
Amy Korzenowski

Rev. Dr. Joy McDonald Coltvet
Bruce Olsen
John Peck
Peter Polga



Corporate Office

1415 Almond Avenue, St. Paul, MN 55108

(651) 646-2941 | www.Lyngblomsten.org